

POLE-TOP-SL1-D- INSTALLATION INSTRUCTIONS

WARNING!

IMPORTANT SAFEGUARDS:

Read and Follow all safety instructions before Installation! Save these instructions and deliver to owner after installation.

IMPORTANT: Read all instructions carefully before attempting installation. If you do not understand these instructions, please consult your local distributor. Thoroughly inspect your fixture for any freight damage; freight damage should be reported to the delivery carrier.



PREPARING YOUR FIXTURE

STEP 1: Make sure all active power is off

WIRING YOUR FIXTURE!

- STEP 1: Connect both the black AC fixture wire to the black supply wires (line).
- STEP 2: Connect both the red A C fixture wire to the white supply wires (neutral).
- STEP 3: Connect both the green AC fixture wire to the green supply wire (ground).

Installation Steps

STEP 1: Pic shows the Pole-Top that the customer will receive



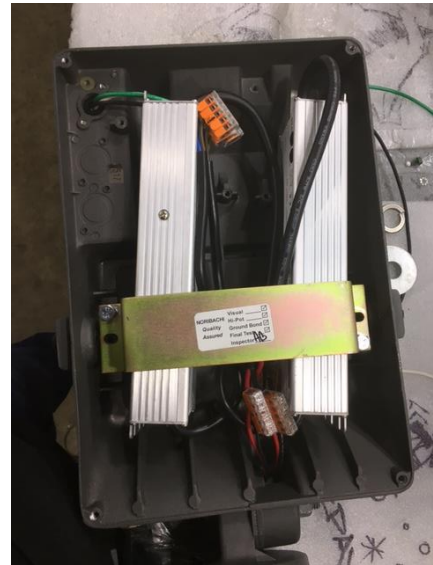
Picture 1

Installation Steps

STEP 2: Open the FLXXL fixture Driver box as shown in Picture 3 and 4. Now insert the Mounting screw in the hole provided as shown in Pic 5 and 6.



Picture 2

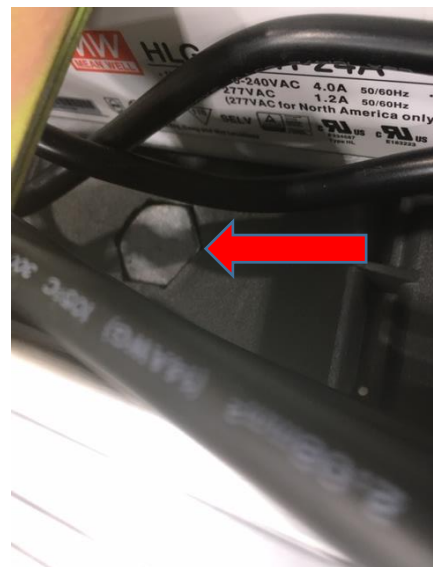


Picture 3



Picture 4

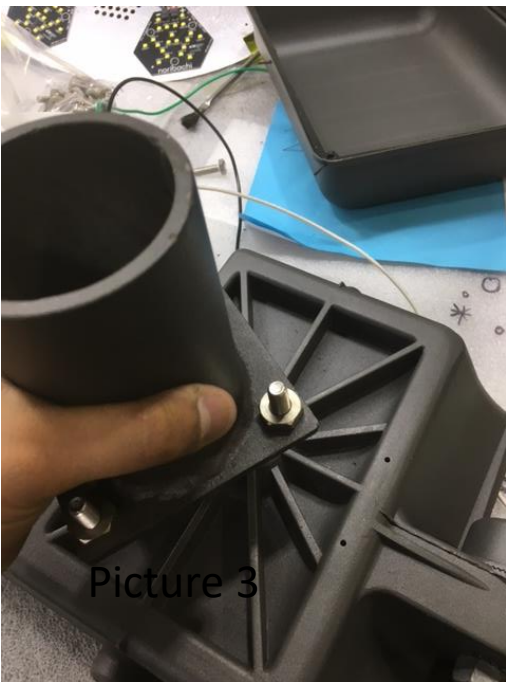
MOUNTING SCREW



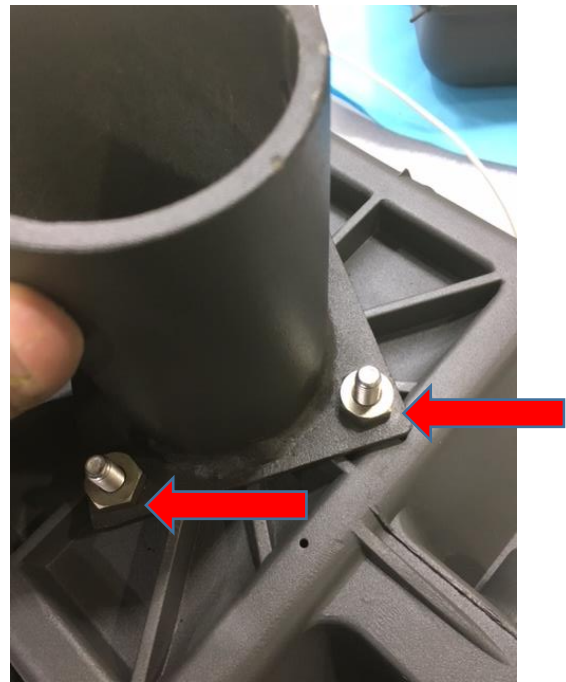
Picture 5

Installation Steps

STEP 3: Once the screw is placed in the hole turn the fixture and place the provided Pole-Top on the back of the fixture as shown in Picture 7. Make sure the placing of the Pole top is exact as shown in Picture 8. Now Put the Washer and the Ring on the screw and secure the assembly using the Provided nut.



Picture 6



Picture 7



Picture 8



Picture 9

TROUBLESHOOTING TIPS

STEP 1: Verify proper line voltage is present and wired to the correct input voltage lead.

STEP 2: Verify fixture wiring.

STEP 3: Verify fixture is grounded.