

Instructions for LED Emergency Lighting Fixture



IMPORTANT :

The battery in this unit may not be fully charged. After electricity is connected to the unit for at least 24 hours, then normal operation of this unit should take effect. To check, press the "TEST" button. The LED lamps on the unit should turn on.

In accordance with NFPA 101, your emergency lighting system must be tested monthly for a minimum of 30 seconds and annually for 90 minutes. Refer to your local codes for any additional requirements that may apply.

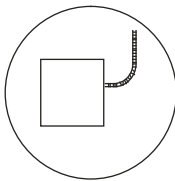
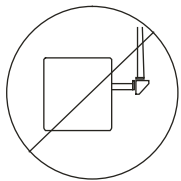
IMPORTANT SAFEGUARDS

When using electrical equipment, basic safety precautions should always be followed including the following:

READ AND FOLLOW ALL SAFETY INSTRUCTIONS

1. Do not use outdoors.
2. Equipment should be mounted in locations and at heights where it will not be subject to tampering by unauthorized personnel.
3. Do not mount near gas or electric heaters.
4. The use of accessory equipment not recommended by the manufacturer may cause an unsafe condition.
5. Do not use this equipment for anything other than its intended use.
6. Servicing of this equipment should be performed by qualified personnel.
7. Disconnect AC power before servicing.

SAVE THESE INSTRUCTIONS INSTALLATION INSTRUCTION



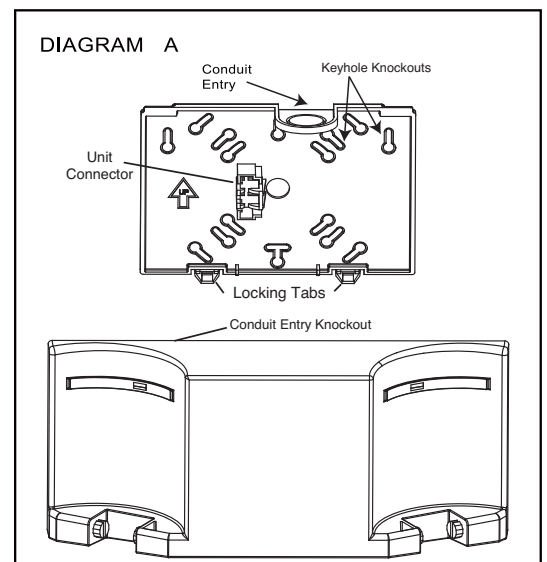
FLEXIBLE CONDUIT ONLY

INSTALLATION (J-BOX MOUNT):

1. Before starting installation, make sure that AC power is turned OFF.
2. Remove unit's backplate by pushing through the two tabs at the bottom using a narrow screwdriver.
3. Feed fixture leads through back plate and connect to AC power leads coming into the junction box.
4. For 120V, connect the BLACK lead to HOT of the power supply and for 277V connect the RED lead. Connect the WHITE lead to NEUTRAL of the supply. Use a wirenut to cap off the unused lead.
5. Mount back plate on J-Box and secure with screws.
6. Connect battery only after continuous AC power can be provided to the unit.
7. Align tabs and push housing directly onto the backplate. Apply continuous AC power.

INSTALLATION (CONDUIT MOUNT):

1. Before starting installation, make sure that AC power is turned OFF.
2. Remove unit's backplate by pushing through the two tabs at the bottom using a narrow screwdriver.
3. Secure backplate to wall surface using keyhole knockouts on the back. Use the conduit entry knockouts on the backplate and the unit's housing for making the conduit connection. Route fixture leads through hole in conduit flange.
4. Make AC power connections. For 120V, connect the BLACK lead to HOT of the power supply and for 277V connect the RED lead. Connect the WHITE lead to NEUTRAL of the supply. Use a wirenut to cap off the unused lead.
5. Connect battery only after continuous AC power can be provided to the unit.
6. Align tabs and push housing directly onto the backplate. Apply continuous AC power.



INSTALLATION (WALL/CEILING MOUNT):

1. Before starting installation, make sure that AC power is turned OFF.
2. Remove unit's backplate by pushing through the two tabs at the bottom using a narrow screwdriver.
3. Secure backplate to wall surface using keyhole knockouts on the back.
4. Feed fixture leads through back plate and connect to AC power leads. For 120V, connect the BLACK lead to HOT of the power supply and for 277V connect the RED lead. Connect the WHITE lead to NEUTRAL of the supply. Use a wirenut to cap off the unused lead.
5. Connect battery only after continuous AC power can be provided to the unit.
6. Align tabs and push housing directly onto the backplate. Apply continuous AC power.

OPERATION

1. During an electrical power failure, the LED lamps will automatically come on for a minimum of 90 minutes.
2. To test, depress the "TEST" switch. The emergency LED lamps will illuminate. When the switch is released, the lamps will go off.

WARNING

Caution: Always turn off AC power to the equipment before servicing. Servicing should be performed only by a qualified service technician. Use only MANUFACTURER supplied replacement parts.

BATTERY : The battery supplied with this unit requires no maintenance. However, it should be tested periodically and replaced when it no longer operates the lamp heads for the duration of 30 seconds. The battery in this unit has a life expectancy of 4 years when used in a normal ambient temperature of 72°F.

WIRING DIAGRAM

