

SPECIFICATIONS

EMERGENCY

HOUSING

- Decorative die-cast aluminum housing
- Standard white finish
- 4" Trim ring with standard can and back plate

ELECTRICAL

- Unit offered as AC only, or battery backup
- Dual 120/277V
- Operating Temperature: 0°C - 45°C (32°F - 113°F)

ILLUMINATION

- Molded polycarbonate lens

BATTERY

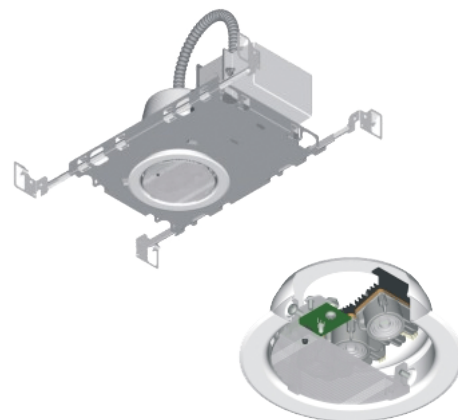
- 3.6V, 5Ah Li-SOCI2 battery
- LVD prevents battery from deep discharge
- Internal transfer switch automatically connects battery to lamp heads for 90-minute emergency illumination
- Two-rate charger initiates battery charge to recharge in battery in 24 hours

CODE COMPLIANCE

- cETLus Listed for Indoor Locations
- Meets UL924, NFPA101, NEC, OSHA, Local and State Codes
- BAA Compliant

WARRANTY

- 5 Year



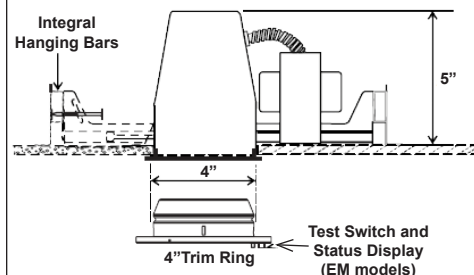
**RDEL
Recessed AC/EM
Down Light**

ORDERING INFORMATION

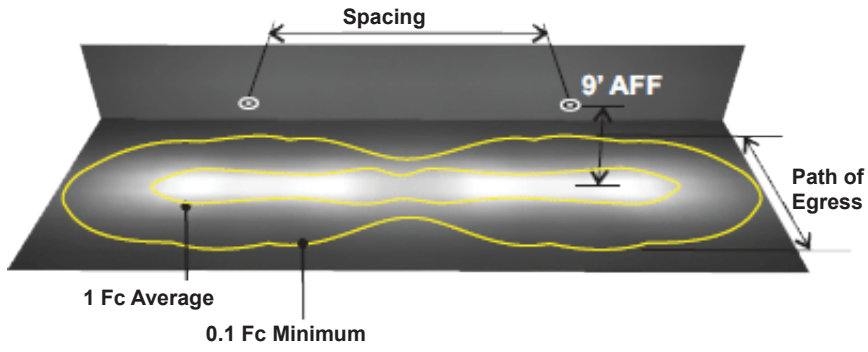
CATALOG#	Description
RDEL-4W	4W, 225 Lumens, AC Only
RDEL-7W	7W, 324 Lumens, AC Only
RDEL-7W-EM	7W, 300 Lumens, Battery Backup
RDEL-10W-EM	10W, 432 Lumens, Battery Backup

OPTIONS (Factory Installed)

SD	- Self Diagnostics (EM Models Only)
DL	- Damp Location
SW120	- Security Lighting with Control Switch-120V (Standard EM Models)
SW277	- Security Lighting with Control Switch-277V (Standard EM Models)
SW-SD	- Security Lighting with Control Switch for EM-SD units (120/277V)
2AC	- Dual AC Input (AC models only)
CW	- -40°C (EM-SD models only)
TD	- 20 Minute Time Delay (EM-SD models only)
IC	- Insulation Contact Related
CC	- Custom Color



SPACING GUIDELINES



Model	Mtg Ht	Spacing		
		Path of Egress Width		
		3ft.	6 ft.	10 ft.
7W	9'	50'	40'	25'
10W	9'	55'	50'	40'

SELF DIAGNOSTICS

STATUS	LED DISPLAY
NORMAL FULL CHARGE	● GREEN ON
NORMAL FAST CHARGE	● ORANGE ON
FAILED BATTERY	●● RED FLASH FAST
FAILED LAMP	●● GREEN FLASH
FAILED TRANSFER	●● ORANGE FLASH
FAILED CHARGER	●● RED FLASH SLOW